

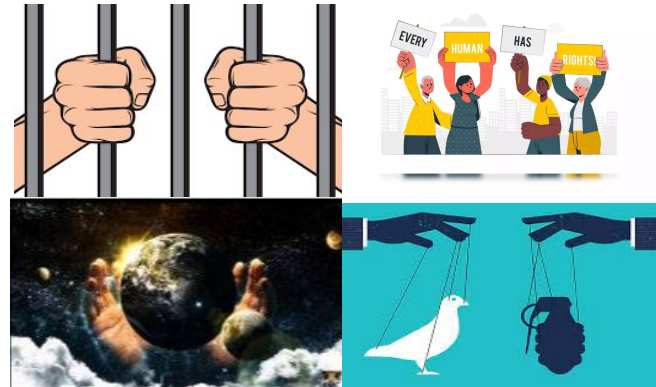


Faith, Philosophy & Ethics (GCSE Religious Studies)

Miss McCabe & Mr Ellis

Qualification overview

- Exam board: AQA, Specification A
- Two components
- Component 1: The study of religions: beliefs, teachings and practices (Islam and Christianity)
 - Key Beliefs e.g. The nature of God, beliefs about life after death and predestination and the significance of holy books and books of authority
 - Practices e.g. Prayer, charity, festivals and specific practices in both religions (Five Pillars and the Ten Obligatory Acts and sacraments)
- Component 2: Thematic studies - we will choose four
 - Theme A: Relationships and families.
 - Theme B: Religion and life.
 - Theme D: Peace and conflict.
 - Theme E: Crime and punishment.
 - Theme F: Human rights and social justice



Assessment overview



- 100% exam assessment at the end of year 11
- Two exams each 1 hour 45 minutes and each worth 50% of final grade
- There are four sections in each exam with the same format of questions 1, 2, 4, 5 and 12 marks.
- Assessment Objectives:
 - AO1: Demonstrate knowledge and understanding of religion and beliefs and social issues including:
 - beliefs, practices and sources of authority
 - influence on individuals, communities and societies
 - similarities and differences within and/or between religions and beliefs.
 - AO2: Analyse and evaluate aspects of religion and belief, including their significance, influence and impact of key social issues.

To be successful, you must

- Be willing to develop and express your opinions, attitudes and ideas.
- Be open to questions about belief, values, meaning, purpose and truth.
- Consider views you haven't thought about before.
- Be able to weigh up arguments and think critically.
- Learn to ask questions about the nature of reality



Next steps & Enrichment opportunities



- FPE is a great stepping stone to any social science A level subject such as Sociology, Health and Social Care, Politics and Criminology as well as Geography, History and English
- It is also a good subject to combine with GCSE History, Geography, Health and Social Care and Business Studies
- FPE can also help you to develop skills essential for success in GCSE English
- It helps develop critical thinking needed in many careers such as:

Medicine
Police
Teacher
Diplomat

Nursing
Social worker
Charity worker
Youth Worker
...and many more...

Social care
Journalist
Lobbyist
Marketing

Lawyer
Political consultant
Human Rights advocate
Communications

Questions?

-

